

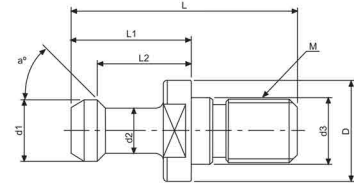


Pull Studs



BT No Through Hole

- MAS 403.
- SNCM 21 Alloy Steel.
- Hardness HRC 54° ±2°.
- Ground Threads.

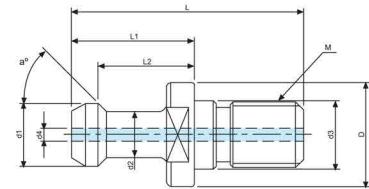


Stock Code	Taper	a°	L	L1	L2	D	d1	d2	d3	M
BT-501	BT30 x 45°	45	43	23	18	16.5	11	7	12.5	M12
BT-510	BT30 x 90°	90	43	23	18	16.5	11	7	12.5	M12
BT-503	BT40 x 45°	45	60	35	28	23	15	10	17	M16
BT-511	BT40 x 90°	90	60	35	28	23	15	10	17	M16



BT With Through Hole

- MAS 403.
- JIS B6339 - 1986.
- SNCM 21 Alloy Steel.
- Hardness HRC 54° ±2°.
- Ground Threads.

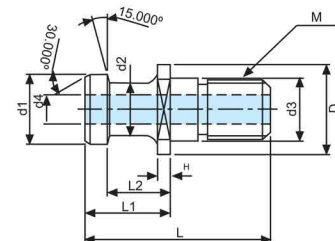


Stock Code	Taper	a°	L	L1	L2	D	d1	d2	d3	d4	M
BT-514	BT30 x 45°	45	43	23	18	16.5	11	7	12.5	4	M12
BT-516	BT40 x 45°	45	60	35	28	23	15	10	17	4	M16
BT-518	BT40 x 90°	90	60	35	28	23	15	10	17	4	M16
BT-519	BT50 x 45°	45	85	45	35	38	23	17	25	7	M24
BT-521	BT50 x 90°	90	85	45	35	38	23	17	25	7	M24



ISO - A Type

- ISO / JIS 7388/2/A - 1984A.
- SNCM 21 Alloy Steel.
- Hardness HRC 54° ±2°.
- Ground Threads.



Stock Code	Taper	L	L1	L2	D	d1	d2	d3	d4	M	H
BT-529	ISO40-A	54	26	20	23	29	24	27	7	M16	3
BT-530	ISO50-A	74	34	25	36	28	21	25	11.5	M24	3